



# SPEED FACE

FACE ATTENDANCE  
MACHINE WITH ACCESS  
CONTROL



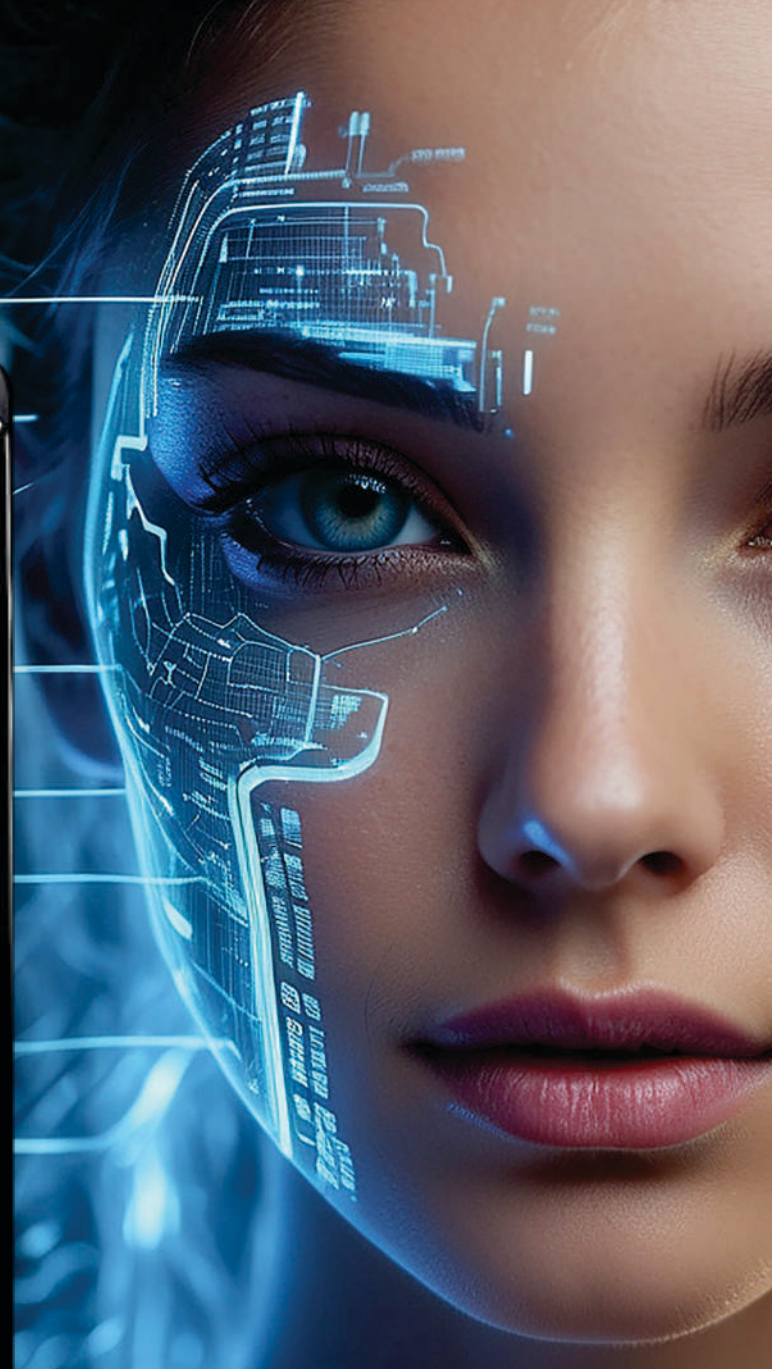
+91-9315441078  
+91-9034757673



[www.ampletrails.com](http://www.ampletrails.com)



[info@ampletrails.com](mailto:info@ampletrails.com)



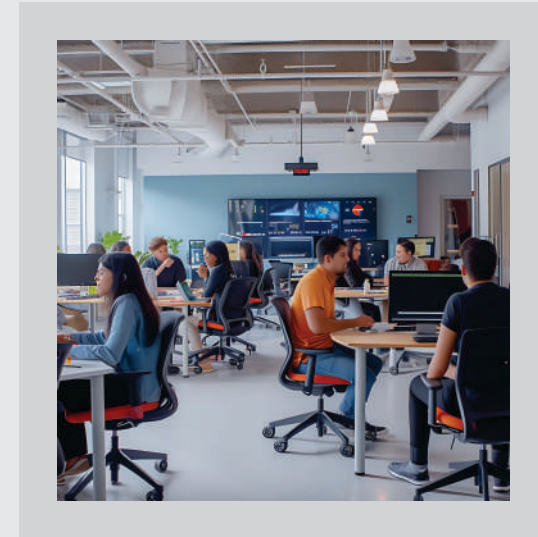
# HIGHER EFFICIENCY



**PREVENT THEFT**



**PREVENT  
UNAUTHORIZED ENTRY IN  
SENSITIVE AREA**



**SECURITY OF MANPOWER  
& ASSETS**

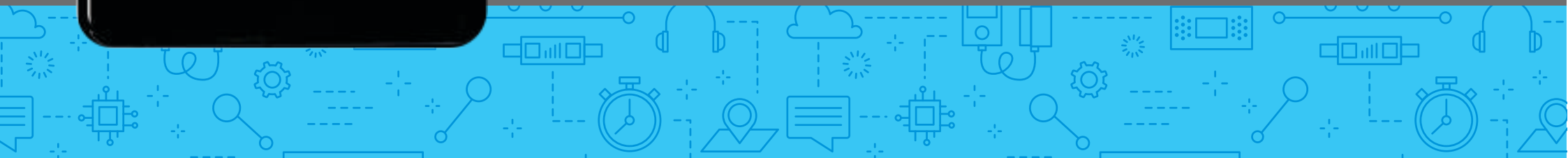




# THE CONCEPTUALIZATION

This versatile door controller is equipped with two cameras

- IR Camera- Live Detection
- Surveillance-grade Camera to capture the user identity

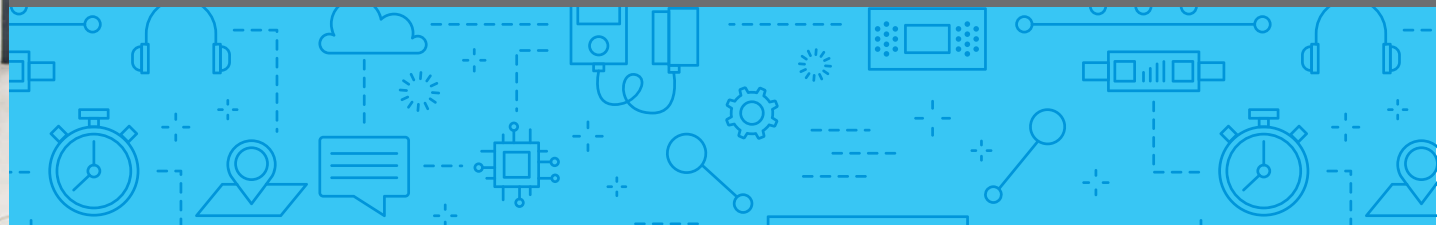




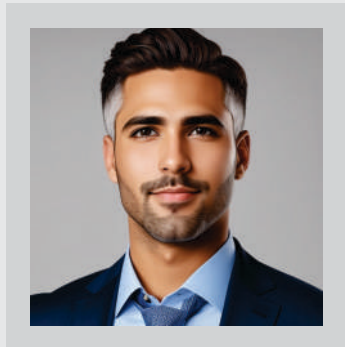
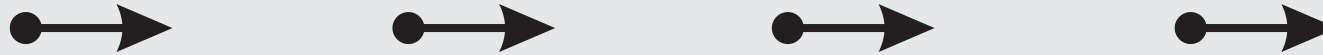
# CONVENIENT & CONTACTLESS

---

- Convenient & Contactless
- No Long Queues
- Walk, Look and Go
- Very High Throughput
- Perform Special Functions from Device UI/UX

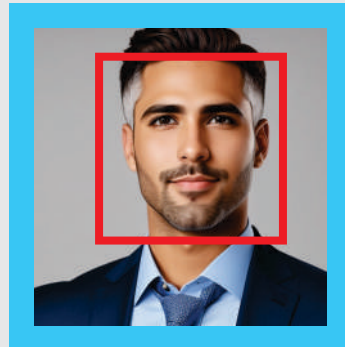


# DEEP LEARNING TECHNOLOGY WORKING



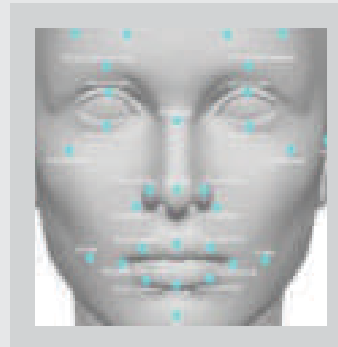
## IMAGE CAPTURING

Image Capturing From Real-time Video Stream



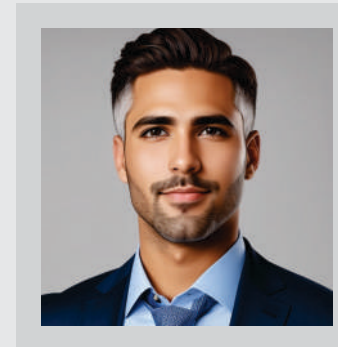
## Face Detection

Face Detection And Extraction With Reference Nodal Points



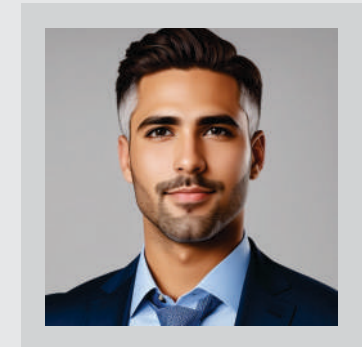
## Face Alignment

Face Familiarization by 2D/3D Alignment of Convolutional Layers



## Face Representation

Pixels are Transformed into Feature Vectors-Templates

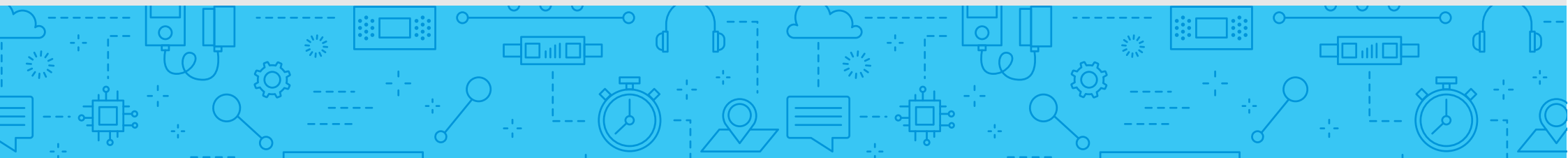


## Face Matching

Similarity Score 98%

---

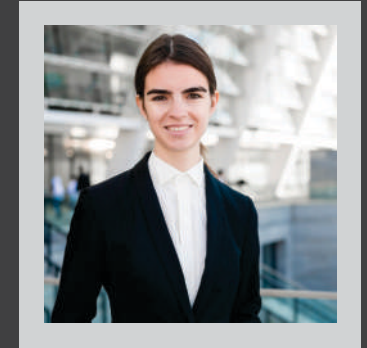
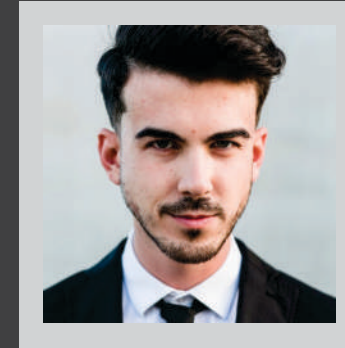
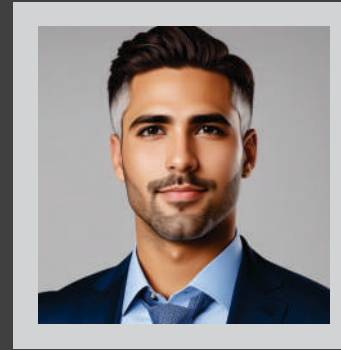
Deep Learning Algorithm  
Live Face Detection to Eliminate Masquerades  
Convolutional Neural Network based Matching





# MASSIVE CAPACITY

- 50,000 Templates (1:1 and 1:N)
- 3 Face Templates per User
- 50,000 Users
- 1,50,000 Events
- Good Performance in Challenging Conditions
- High Speed Processor



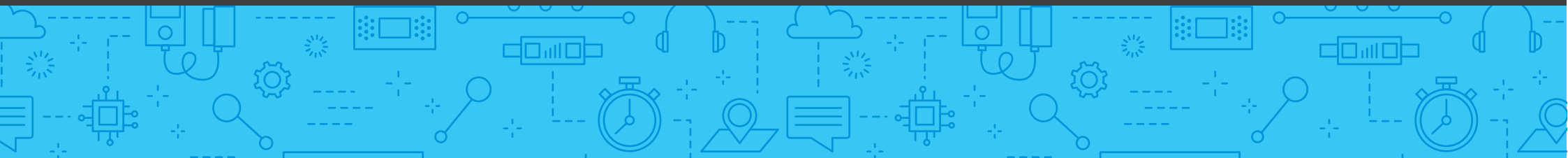
On-Premise Solutions



Cloud-based Solutions

## STORAGE OPTIONS

- On-Premise Solutions
- Cloud-based Solutions





# FEATURES OF SPEED FACE

---

- **Industrial grade design, with stable performance and smooth lines**
- **5-inch IPS LCD touch screen**
- **99.99% recognition accuracy<sup>1</sup> (99.77% recognition rate under 1% false accept rate; 99.27% recognition rate under 0.1% false accept rate)**
- **Anti-back light**
- **Live detection**
- **Recognition speed less than 1s**
- **Standard with 10-thousand face database**
- **Wi-Fi**



# EASY ENROLMENT

---

- **Jus a selfie and you are ready to go**
- **Upload of users to multiple devices**
- **After enrolment access can be granted without any touch.**
- **Contactless for ultimate hygiene**
- **Color screen for face positioning**
- **Audio Prompt**
- **More data measured than fingerprint very High Security**
- **Work well even in darkness**
- **After face enrollment user can access the turnstile**





# **SPEED FACE**

---

- **Live events monitoring**
- **Can be access from any where within our Network**
- **Realtime data**
- **Data backup on device and Server**
- **Realtime monitoring of punches**
- **Data transfer from one device to another device**

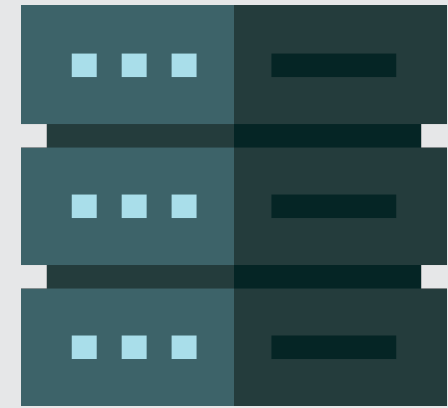




# DATA STORAGE

---

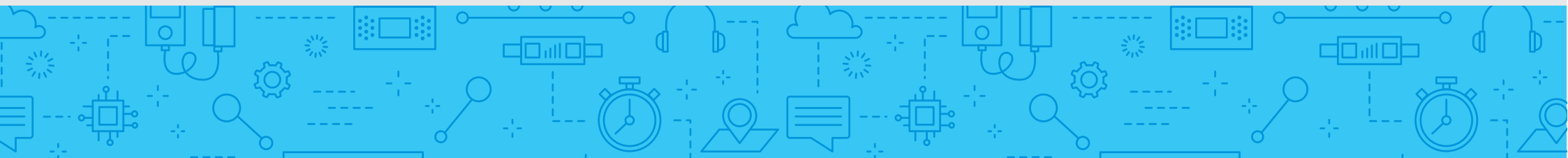
- Data will be stored in device.
- Auto push of data into SQL server
- Realtime data available in SQL server
- Events are pushed in Realtime to server



On-Premise Solutions



Cloud-based Solutions

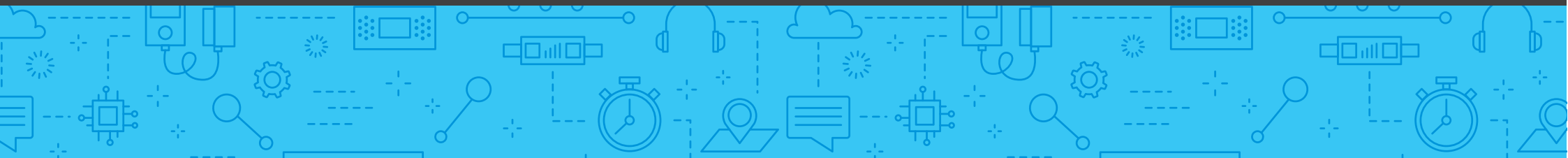


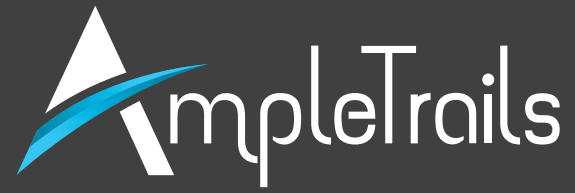


# REPORTS

---

- **Realtime reports**
- **Multiple formats supported**
- **Excel Reports**
- **PDF Reports**
- **Word report**
- **Realtime deletion of the employee from device.**





# THANKYOU



+91-9315441078/9034757673



info@ampletrails.com



www..com