



## Key Features

### • Highly Expandable:

Up to 6 additional monitors can be connected to the main monitor using a combination of 7-inch wired monitors and 1.8-inch wireless monitors (However, the maximum possible number of 7-inch wired monitors is 3). In addition, PBX connectivity is also supported.

• **Wireless Monitor:** Using the wireless monitor, check visitors and respond promptly from the living room, kitchen and elsewhere in the home even while you are doing something else. Up to 6 wireless monitors connectable. Max wireless range is 100 m with no obstacles. You can add on repeaters to expand the range. Up to 2 wireless repeaters connectable.

• **7-inch Screen:** The main monitor and extension monitor have a 7-inch wide screen that offers easy viewing of wide vertical and horizontal views.

• **Voice Change Function:** This function makes woman's voice (higher keys) sounds like a man's (lower keys).

### • Electric Lock Release Support:

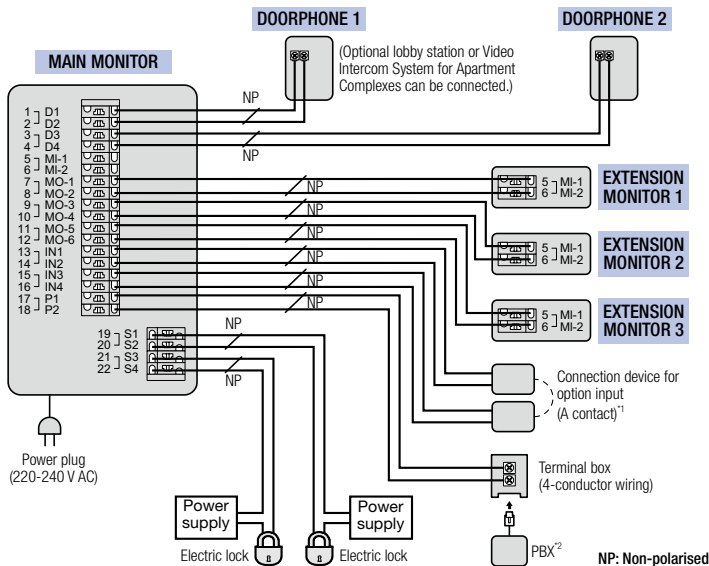
The electric locks can be easily and quickly released using monitors (wired or wireless) from anywhere in the house.

• **Picture Recording Function:** The main monitor and extension monitor can record doorphone images from up to 50 doorphone calls or monitoring sessions. (up to 8 still images per visitor/session)

### • Night Vision with LED lights (illumination lamp):

Door station is equipped with LED lights (illumination lamp). It enables the colour display of visitors at a distance of about 50 cm at night.

## Wiring Schematic Diagram



\*1 Connection devices for option input (A contact) can be used when a VL-V900 and VL-V700 series Video Intercom System for Apartment Complexes is used.

- Make sure to connect emergency terminals to the IN1/IN2 terminals.
- Make sure to connect doorbells to the IN3/IN4 terminals. A doorbell and doorphone 2 cannot be used together.

\*2 Connectable PBX Model Numbers: KX-TDA30/100/100D/200/600 series, KX-TDE100/200/600 series, KX-NS300/500/700/1000 series

Please consult your dealer when connecting with a PBX.

## Wire type and length

Wiring run	Wire type <sup>3</sup>		
	Diameter		Length (Max.)
Doorphone – Main monitor – Extension monitor <sup>4</sup>	φ 0.65 mm	22 AWG	100 m
	φ 1.0 mm	18 AWG	130 m
	φ 0.5 mm	CAT 5	50 m
Main monitor – Electric lock <sup>5</sup>	φ 0.5 mm - φ 1.2 mm (24 AWG - 17 AWG)		According to specification of connected device.
Main monitor – Connection device for option input (A contact) <sup>5</sup>	φ 0.5 mm - φ 1.2 mm (24 AWG - 17 AWG)		According to specification of connected device.
Main monitor – PBX	φ 0.65 mm	CAT 3 or 22 AWG	100 m

<sup>3</sup>Type: Single-pair cable with outer sheath (jacket)

Conductor: Copper solid

• A certified power supply wiring has to be used with this equipment. The relevant national installation and/or equipment regulations shall be considered. A certified power supply wiring not lighter than ordinary polyvinyl chloride flexible wiring according to IEC 60227 shall be used.

\*4 When an extension monitor is used, make sure that the total wiring length from the doorphone to the main monitor and then to the extension monitor, is within about 100 m.

\*5 When using an electric lock or a connection device for option input (A contact), select a device that meets the following guidelines:

- Electric lock connection terminal (S1/S2, S3/S4):
  - N/O dry closure contact
  - 30 V AC (1 A)/24 V DC (1 A) or lower
- Connection device for option input (A contact) terminal (IN1/IN2/IN3/IN4):
  - Input method: No-voltage contact
  - Open-circuit voltage between terminals: DC 7 V or less
  - Detection definite time: 0.1 seconds or more
  - Short-circuit between terminals: 5 mA or less
  - Resistance value: make: 500 Ω or less, break: 15 KΩ or more

## Accessory Information

**For the Sub Monitor:** AC adaptor × 1, Rechargeable battery × 1, Charger × 1

**For the Door Station:** Screw (3.8 mm × 20 mm) × 2

**For the Main Monitor Station/Extension Monitor:** Mounting bracket × 1, Screw (4 mm × 16 mm) × 2

## Optional Accessories

Door Station (Doorphone)



**VL-V522L**  
(Surface mount)

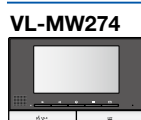
Door Station (Doorphone)



CMOS 1.0 M pixels  
**VL-V554U** (Surface mount)  
**VL-V554U** (Flash mount)

CMOS 0.3 M pixels  
**VL-V555** (Surface mount)

Extension Monitor



**VL-MW274**

Wireless Monitor Station (Sub monitor)



**VL-W617**

Wireless Repeater



**VL-FAN2**

Lobby Station



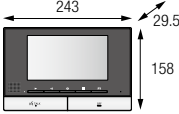
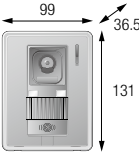
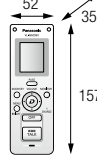
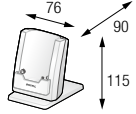
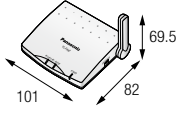
Up to 20 main monitors can be connected.

# Model Composition

VL-SW274

VL-MW274 x 1, VL-W617 x 1, VL-V522L x 1

## Specifications

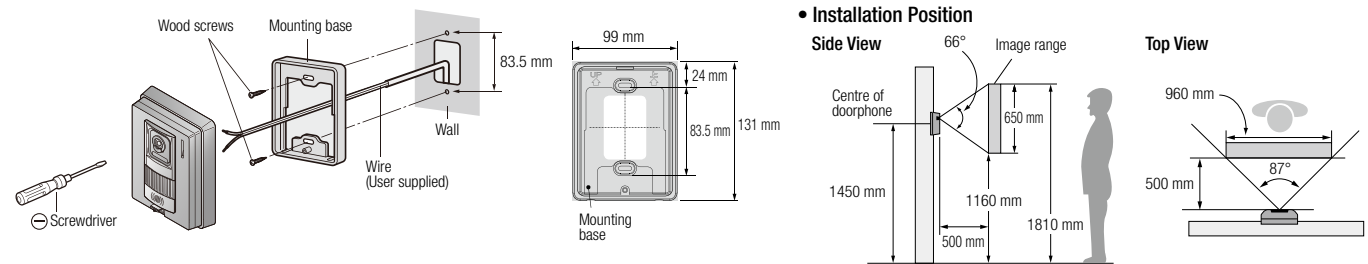
Model number and name	VL-MW274	VL-V522L	VL-W617		VL-FAN2
	Main Monitor Station (Main monitor) Extension Monitor	Door Station (Doorphone)	Wireless Monitor Station (Sub monitor)		Wireless Repeater
			Main body	Charger	
Dimensions (mm)	Up to 3 <sup>1</sup> (not including the main monitor) 	Up to 2 	Up to 6 <sup>1</sup> 		Up to 2 
Power source	220-240 V AC, 50/60 Hz	Power supplied by the main monitor	Ni-MH battery (3.6 V DC / 650 mAh)	AC adaptor (100-240 V AC, 50/60 Hz) Output: 6.5 V DC, 0.5 A	AC adaptor (100-240 V AC, 50/60 Hz) Output: 6.5 V DC, 0.5 A
Power consumption	Standby: 1.9W During operation: 10.0W	-	-	Standby: 0.07W (when the sub monitor is not placed in the charger) During charging: 1.8W	Standby: 0.6W During operation: 1.3W
Dimensions (H x W x D) (Excluding protruding sections)	158 x 243 x 29.5 mm	131 x 99 x 36.5 mm	157 x 52 x 35 mm	115 x 76 x 90 mm 105 x 76 x 48 mm (using without the stand)	27 x 101 x 82 mm 69.5 x 101 x 82 mm (when raising the antenna)
Weight	825 g <sup>2</sup>	200 g	175 g (including the battery)	115 g (including the stand)	85 g
Operating environment	Ambient temperature: Approx. 0 °C to +40 °C Relative humidity (non-condensing): up to 90 %	Ambient temperature: Approx. -15 °C to +55 °C Relative humidity (non-condensing): up to 90 % (tested up to -20 °C)	Ambient temperature: Approx. 0 °C to +40 °C Relative humidity (non-condensing): up to 90 %	Ambient temperature: Approx. 0 °C to +40 °C Relative humidity (non-condensing): up to 90 %	Ambient temperature: Approx. 0 °C to +40 °C Relative humidity (non-condensing): up to 90 %
Display	7-inch wide colour / WVGA (800x480 pixels)	-	1.8-inch colour display	-	-
Display language	English, Arabic	-	Depends on main monitor	-	-
Talking method	Hands-free	-	Hands-free	-	-
Frequency range	2.402 GHz – 2.481 GHz	-	2.402 GHz – 2.481 GHz	-	2.402 GHz – 2.481 GHz
Viewing angle	-	Horizontally: Approx. 87° Vertically: Approx. 66°	-	-	-
Installation method	Wall mount (mounting bracket supplied)	Surface mount (mounting base supplied)	-	-	-
Minimum illuminance required	-	1 lx (within approx. 50 cm from the camera lens)	-	-	-
Lighting method	-	Warm white coloured LED lights, Infrared LEDs	-	-	-
Transmitting range	-	-	Approx. 100 m (line-of-sight distance from the main monitor)	-	Approx. 100 m (line-of-sight distance from the main monitor)
IP rating / IK rating	-	IPX3 <sup>3</sup>	-	-	-
External material	Flame retardant PC+ABS resin, Flame retardant ABS resin	Flame retardant ABS resin	ABS resin	ABS resin	PS resin

\*1 When sub monitors and extension monitors are used together, a total of up to 6 sub monitors and extension monitors can be registered.

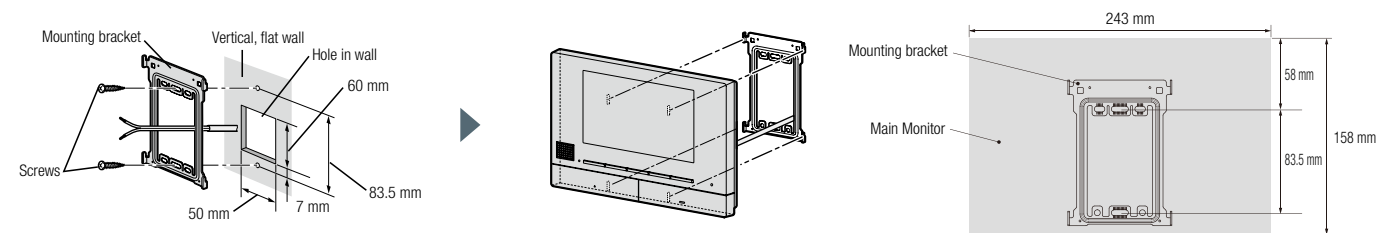
\*2 Including AC cord. The weight of the AC cord differs depending on the region.

\*3 Water resistance is only assured if the doorphone is installed correctly according to the instructions in the Installation Guide, and appropriate water protection measures are taken.

## Installing the Doorphone



## Installing the Main Monitor/Extension Monitor



### Important

- Safety Precaution: carefully read the operating instructions and installation manual before using this product.

- The actual product may vary slightly from photograph.
- Weights and dimensions are approximate.
- Design and Specifications are subject to change without notice.
- These products may be subject to export control regulations.

## DISTRIBUTED BY :

AmpleTrails info@ampletrails.com 9315441078

**Panasonic**<sup>®</sup>